



**M100 Most popular**

6.5"x8.5"  
Down to 5.5"x8"  
Fine silky mono lace top with 1" clear PU perimeter for taping



**M101 Soft Skin base**

8"x10"  
Any size  
Soft clear polyurethane skin base



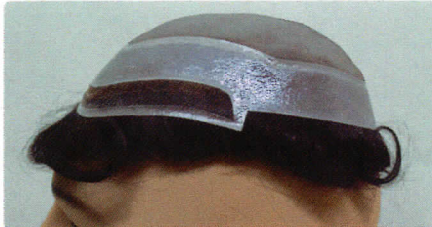
**M102 Fit different size**

7.5"x10"  
Can cut to 7"x7" or 7.5"x8.5"  
Mono lace top with poly coated eage



**M103 Cool,Durable lace**

7.5"x10"  
Any size  
Full Fine welded mono lace



**M104 Highly recommend**

7"x9"  
Down to 6"x8.5" Mono lace top + 1" clear skin taping perimeter, 1/4" French lace front



**M105 Large+Natural**

8"x10"  
Any size  
Full French Lace



**M106 Most Natural hairline**

6.5"x8.5"  
Down to 5.5"x8"  
French lace with 1" clear PU coating from temple to temple across back



**M107 Natural,Breath**

7.5"x9.5"  
Down to 6.5"x9"  
Fine welded mono lace with 1" PU coating temple to temple and sewed on taping tab front



**M108 Large+Easy attach**

8"x10"  
Down to 7"x9"  
Fine silky mono lace top with clear PU scallop front and PU coating back



**M109 Natural+easygoing**

8"x10"  
Down to 7"x9"  
Mono lace top + 1" clear skin taping perimeter, 1/2" French lace front



**M110 Light density+Super natural**

**Stock Color availability**

11 Human hair color:  
#1, #1B, #2, #3, #4, #5, #6, #7, #17, #18, #20

60 Human hair with Synthetic grey hair color:  
#105, #110, #120, #130, #140, #160, #1B05, #1B10, #1B20, #1B30, #1B40, #1B60, #1B80, #205, #210, #220, #230, #240, #260, #280, #305, #310, #320, #330, #340, #360, #405, #410, #420, #430, #440, #460, #480, #505, #510, #520, #530, #540, #560, #610, #620, #630, #640, #660, #705, #710, #720, #740, #760, #1710, #1720, #1740, #1760, #1780, #1810, #1820, #1840, #2010, #2020, #60